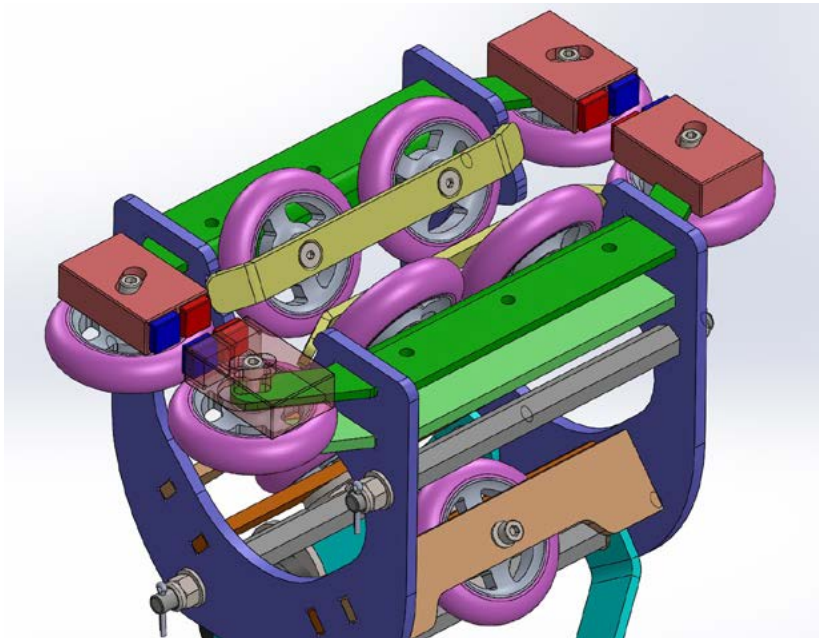


ROLLGLIDER

Magnetic Brakes

Assembly manual



1 Components specification

All components needed, manufactured or provided by Rollglider, are listed in the technical specification (document). The engineering drawings (document) are an unseparable part of this manual.

2 Tools and devices needed

- A set of hex keys
- Wrench size 13
- Ratchet with size 13 nozzles
- Pliers
- Rubber mallet

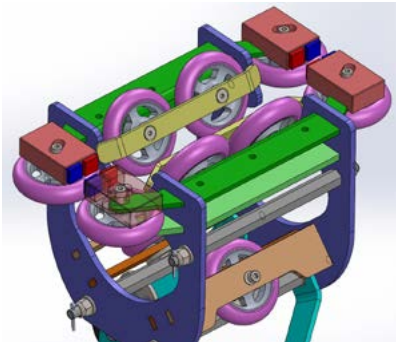


3 General requirements

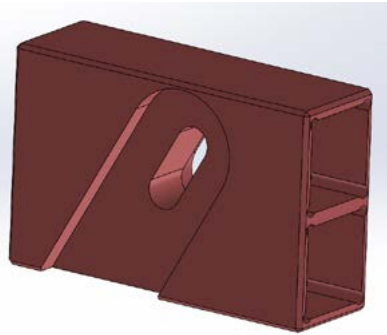
- Do not use a screwdriver or any other mechanically driven tools for tightening nuts and bolts.
- All pieces should be carefully cleaned from dust, cuttings and grease before you start the assembly.
- Clean up the work place after the assembly of each part.
- The padding shims DIN 125 should be placed with the sleek side facing the part.
- The locknuts DIN EN ISO 7040 are single use only. After each disassembly, the locknut should be disposed and replaced with a new one.

4 Assembly

To install the brakes on the Rollglider trolley, first remove the bolts on the side wheels. They should be replaced with longer ones that hold the magnetic brakes as shown in the illustration below. The brakes have slots on both sides - the bottom ones shaped to match the section of the plate that the brakes are being mounted onto. The upper side has a slot for the bolt that holds the brakes.

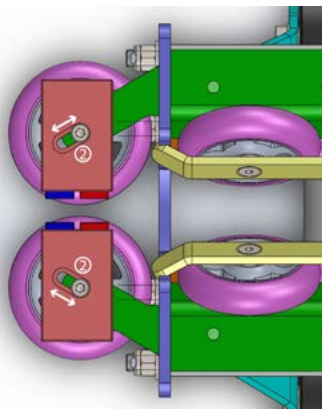
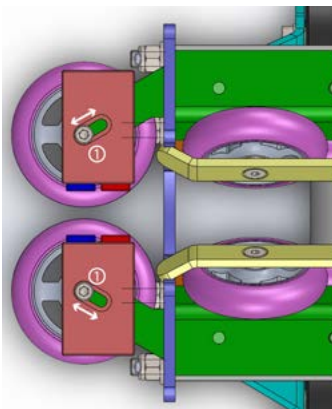


Rollglider trolley with mounted brakes



Attachment section

In case you need to change the distance between the brakes and the copper sheet on the Rollglider line, you could reposition the brakes. To do that, unscrew the locknut slightly and use the rubber mallet to move the brakes to the desired position. The minimum distance between the magnetic brakes and the copper sheet is 6 mm.



① Position with most distance of the brakes to the Rollglider line

② Position with least distance of the brakes to the Rollglider line

